



HODSONS

OFFERS IN THE REGION OF

£357,950

Wrenthorpe Lane

Wakefield, WF2 0QB

PROPERTY SUMMARY

We are pleased to offer to the open market, this immaculate and spacious, extended FOUR BEDROOM semi detached house, situated in this popular residential village location of Wrenthorpe.

4



2



1

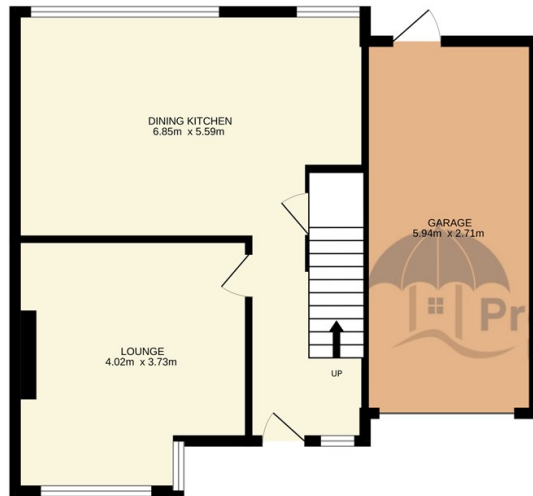




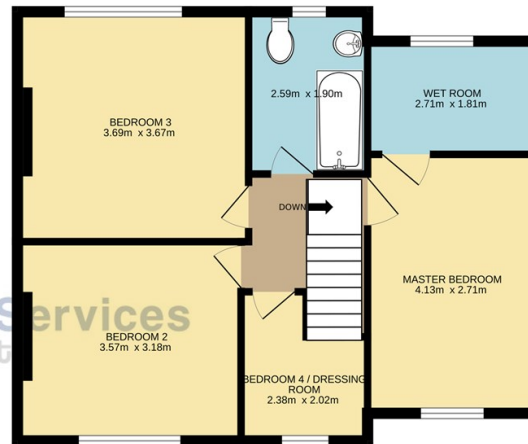




GROUND FLOOR



1ST FLOOR



17 WRENTHORPE LANE, WRENTHORPE, WF2 0QB

Whilst every attempt has been made to ensure the accuracy of the floorplan contained here, measurements of doors, windows, rooms and any other items are approximate and no responsibility is taken for any error, omission or mis-statement. This plan is for illustrative purposes only and should be used as such by any prospective purchaser. The services, systems and appliances shown have not been tested and no guarantee as to their operability or efficiency can be given.
Made with Metropix ©2023

LOCAL AUTHORITY

Wakefield Metropolitan District council

TENURE

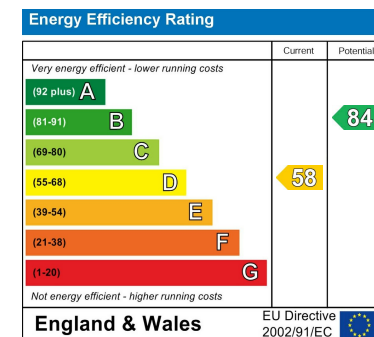
Freehold

COUNCIL TAX BAND

B

VIEWINGS

By prior appointment only



Agents Note: Whilst every care has been taken to prepare these particulars, they are for guidance purposes only. All measurements are approximate and are for general guidance purposes only and whilst every care has been taken to ensure their accuracy, they should not be relied upon and potential buyers/tenants are advised to recheck the measurements

**OFFICE ADDRESS**

37-39 George Street
Wakefield
West Yorkshire
WF1 1LX

OFFICE DETAILS

01924 200544
wakefield@hodsonsproperty.co.uk
www.hodsonsproperty.co.uk